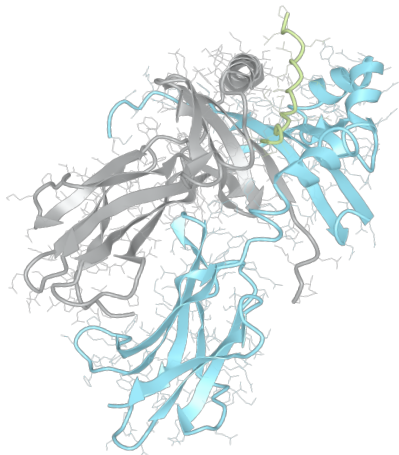


Product datasheet



sHLA– DQB1*03:03bio DQA1*02:01bio

DQB1*0303, DQB10303, DQB1*03, DQB03, DQ9
DQA1*0201, DQA10201, DQA1*02, DQA02

Serological Name	DQ9
Peptide Load	Endogenous
Modification	Unmodified
Conjugation	Biotin
SKU	DQB10303/DQA10201bio

Product Description

Allele Name	DQA1*02:01 DQB1*03:03
HLA Class	HLA Class II
HLA Gene Locus	HLA-DQ
Alternative Allele Name A Chain	DQA1*0201, DQA10201, DQA1*02, DQA02
Alternative Allele Name B Chain	DQB1*0303, DQB10303, DQB1*03, DQB03, DQ9
Description	Recombinant, truncated Class II soluble Human Leukocyte Antigen (sHLA), naturally folded and glycosylated, loaded with endogenous peptides.
Serological Name	DQ9
Serological Split	DQ3
Allele Frequency [World Population]	
A chain	10.1%
B chain	5.2%

Associated products

[DQB10303/DQA10201](#)
[DQB10303/DQA10201pe](#)

Product Specification

Product name	HLA-DQB1*03:03/DQA1*02:01bio
HLA Species	Human
Host Cell Line Species	Mouse
Clone Designation	EP194-B01
Tail Specification	ZP
Peptide Load	Endogenous
Modification	Unmodified
Conjugation	Biotin
Complexity	Monomer
Protein Format	Recombinant, truncated, zipper-stabilized, soluble, non-modified, biotinylated, endogenously loaded
Storage Temperature	4°C (This product should be stored undiluted)
Form	Liquid
Concentration	300.0 µg/µl
Formulation	PBS/0.02% Sodium Azide
pH	7.4
Purification Method	Affinity Chromatography
Grade	Research Use Only [RUO]
Authentication Verification	Sequence Based Typing

Protein Sequences

Alpha Chain Sequence	EDIVADHVAS YGVNLYQSYG PSGQFTHEFD GDEEFYVDLE RKETVWKLPL FHRLR.FDPQ FALTNIQVAVK HNLNLIKRS NSTAATNEVP ETVVFSKSPV TLGQPNTLIC LVDNIFPPVV NITWLSNGHS VTEGVSETSF LSKSDHSFFK ISYLTFLPSA DEIYDCKVEH WGLDEPLLKH WEPEIPAPMS EVDGGGGGAQ LEKELQALEK ENAQLEWELQ ALEKELAQ
Beta Chain Sequence	RDSPEDFYVQ FKGMCYFTNG TERVRLVTRY IYNREEYARF DSDVGVYRAV TPLGPPDAEY WNSQKEVLER TRAEALDTCR HNYQLELRTT LQRRVEPTVT ISPSRTEALN HHNLLVCSVT DFYPAQIKVR WFRNDQEETT GVVSTPLIRN GDWTFQILVM LEMTPQRGDV YTCHVEHPSL QNPTIIVEWRA QSESAQSKVD GGGGAQLKK KLQALKKKNA QLKWKLQALK KCLAQ

Related Products

[DQB10301/DQA10201bio](#)
[DQB10602/DQA10102bio](#)
[DQB10201/DQA10201bio](#)
[DQB10302/DQA10201bio](#)

Applications

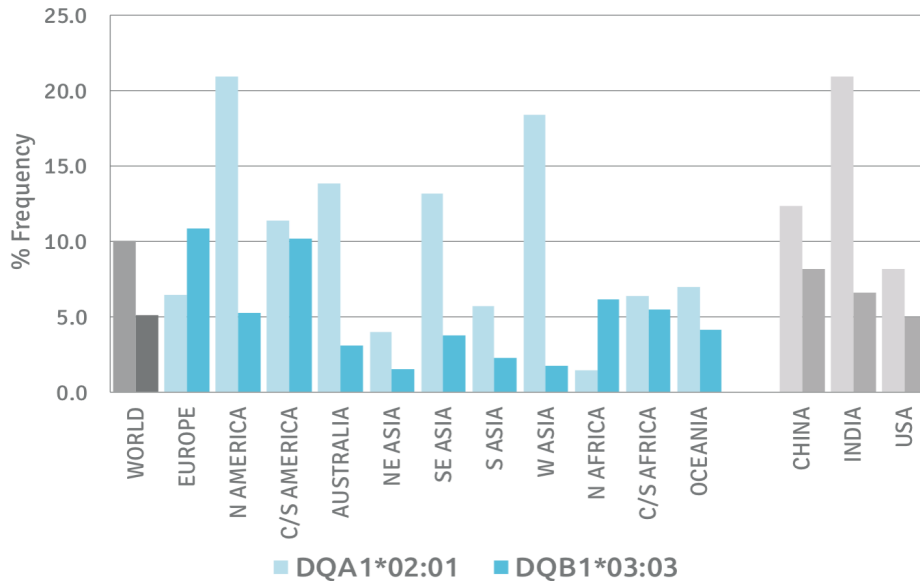
HLA Sandwich ELISAs
 HLA Direct ELISAs
 HLA-Sera Antibody Assays
 HLA Controls in ELISA Assays
 HLA Assay Standards
 HLA Blocking Assays
 HLA Neutralizing Assays
 HLA Competition Assays
 HLA Bead Assays
 HLA Immunization Procedures

Recommended Antibodies

-

Allele Frequency

Worldwide Allele Frequency



Please note:

ALL PRODUCTS ARE FOR RESEARCH USE ONLY. NOT FOR COMMERCIAL USE IN DIAGNOSTIC PROCEDURES.
 For more information, please visit our Policies section on our website. For licensing inquiries, please contact

licensing@hlaprotein.com

 HLA Protein
PURE PROTEIN LLC

